



**Jota**  
on the spot






## **jota instruments** ENDODONTICS

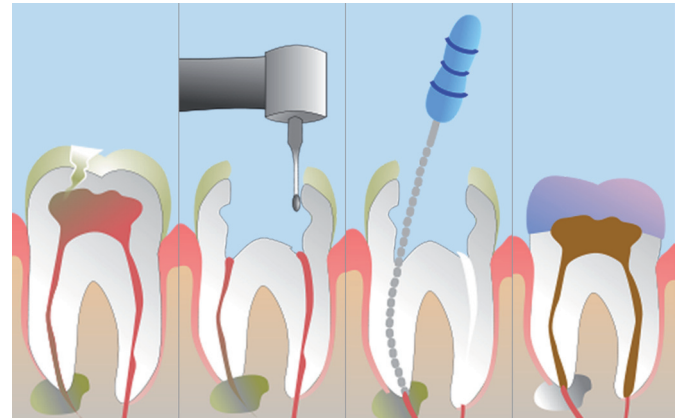
### **The Endo range - comprehensive and efficient**

- › Aids preparation of smooth, conical shapes
- › Reduces the risk of injury
- › Easier removal of dentine chips
- › JOTA NiTi Roto files for the crown-down technique
- › Maximum efficiency with manual and handpiece procedures
- › ISO symbol and colour coding of instruments
- › Durable instruments with stringent material checks



## jota bestseller ENDODONTICS

Barbed broach	
K-Reamer	
NiTi Roto files	
Lentulo	
Gates	



The JOTA Endo range includes the following instruments: JOTA NiTi Roto files / Kerr reamers / files / Hedström files / root canal reamers / lentulos / pluggers / spreaders / crown cutters / diamond rotary instruments

The JOTA Endo range provides dentists with all the options from root canal extension to root filling. All standard treatment techniques can be completed easily and reliably with the comprehensive range.

The coordinated sequence of instruments aids preparation of smooth, regular conical shapes. The instruments also reduce the risk of damage during root canal preparation. The geometry of the instruments ensures easy removal of chips.

### Wide range of applications

The JOTA Endo range can be used for the following:

- › Pulp extirpation
- › Root canal preparation
- › Root canal extension
- › Filling the canal

JOTA Dealer

108002.5950.0180 - 03/2009



**JOTA AG** Rotary Instruments  
Hirschsprungstrasse 2, 9464 Rüthi, Switzerland  
Phone +41 (0)71 767 79 99, Fax +41 (0)71 767 79 97  
info@jota.ch, www.jota.ch **SWISS MADE**