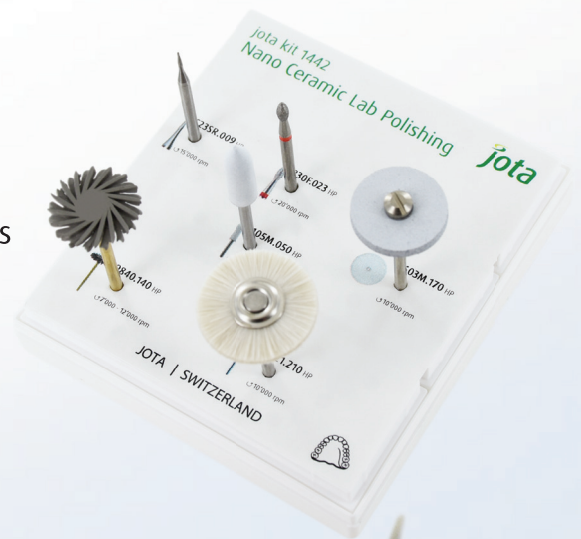


**jota kit 1442**

**NANO CERAMIC LAB POLISHING KIT  
for Hybrid Ceramics**

**Perfect high-gloss for hybrid ceramic restorations!**

- › Customized system for nano-/hybrid-ceramics
- › Verified combination of instruments for finishing  
& high gloss polishing
- › Optimized for chairside workflow with high quality results
- › Complemented by the new Jota swivel technology



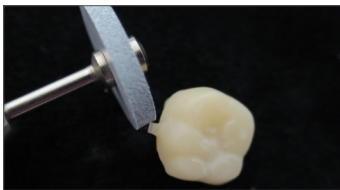
**jota kit 1442**

## NANO CERAMIC LAB POLISHING KIT for Hybrid Ceramics

### Perfect high-gloss for nano ceramic restorations

A nano resin or hybrid ceramic like ENAMIC®, CERASMART™ oder Lava™ Ultimate is a mixture of a polymer material and nano ceramic, combining the best properties of both. Like composites, the material is very resistant against particles fractures but shows in addition the perfect aesthetics and ability for high-gloss polished surfaces like glass ceramics. These materials are indicated for single crowns, inlays, onlays and veneers, and are perfectly suitable for efficient chairside treatments. No need for firing steps after the milling processes. Restorations just need to pass polishing steps.

With the Jota **Nano Ceramic Lab Polishing Set** we are providing you with a precisely coordinated system, which delivers perfect instruments for all working stages. The proven Jota diamonds and carbides to prepare high aesthetic occlusal surfaces are complemented by the specially developed new Jota Swivel diamond polisher. This Instrument is perfect for high-gloss polishing occlusal surfaces and has huge advantages compared with the classical flame-shaped polishers regarding durability and polishing results. The assortment is completed by a Jota goat hair brush for perfect high-gloss. Also. This set is the perfect addition for all laboratories and dentists preferring to work with hand-piece instruments.



#### Trimming the connection points:

The connection point of the support bar or sprue is trimmed by using the medium **Polisher 9603M**. With this instrument also some small adjustments can be done.

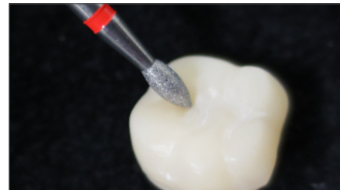
**Recommended speed:**  
approx. 10'000 rpm.



#### Adjusting contact points:

For adjusting the contact points if necessary also **Polisher 9603M** can be used.

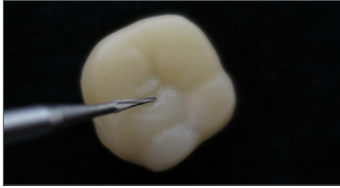
**Recommended speed:**  
approx. 10'000 rpm.



#### Preparing the occlusal surface:

If required, the occlusal contact points and the cusps may be adjusted using **Diamond 830F**.

**Recommended speed:**  
approx. 20'000 rpm.

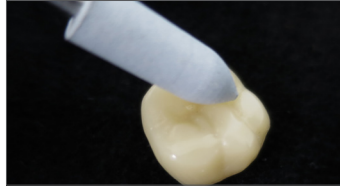


**Refining occlusal fissures:**

For refinishing the fissures or for roughening them before a colour characterization is made **Carbide C23SR** is the perfect instrument.

**Recommended speed:**

approx. 15'000 rpm.



**Pre-polishing the surface and occlusion:**

The flame-shaped **Polisher 9105M** is optimal for pre-polishing the surface.

**Recommended speed:**

approx. 7'000 - 10'000 rpm.



**Gloss polish of the surface:**

The surface, especially the occlusal fissures are gloss polished by using the new **Swivel 9840**. Excessive pressure should not be applied when using the Swivel!

**Recommended speed:**

approx. 7'000 - 12'000 rpm.



**High-gloss polish of the surface:**

The surface and specially the occlusal areas are precisely polished to a high-gloss by using the **Goat Hair Brush 1121** in combination with a polishing paste like the Jota **Emulsion 1550**.

**Recommended speed:**

approx. 10'000 rpm.

**Final result:**



## jota kit 1442

# NANO CERAMIC LAB POLISHING KIT for Hybrid Ceramics

### 9603M.UM.170



Silicon carbide polisher with a medium grit size - perfect for small adjustments. The polisher is to use in combination with the Mandrel 303.HP.050

↻ 10'000 rpm

### 830F.HP.023



Diamond instrument with bonded fine natural diamond grit. This flame shaped instrument is ideal for small adjustments on occlusal surfaces.

↻ 20'000 rpm

### C23SR.HP.009



Conical tungsten carbide instrument with a thin tip. This needle shaped instrument is perfect for refining of occlusal fissures.

↻ 15000 rpm

### 9105M.HP.050



Silicon carbide polisher with a medium grit size. The polisher is the first stage of the polishing system and is primarily used for pre-polishing.

↻ 10000 rpm

### 9840.HP.050



Diamond polisher with the newest Jota Swivel technology. The Swivel is perfect for high-gloss polishing of the occlusal surfaces.

↻ 7'000 - 12'000 rpm

### 1121.HP.210



Goat hair polishing brush to create a high-gloss -specifically on occlusal surfaces after refining. This brush is to use in combination with the Jota polishing Emulsion 1550.

↻ 10'000 rpm

### Recommendation



Additional to the kit 1442 the Jota polishing Emulsion 1550 is recommended

\*The Emulsion 1550 is not part of the Kit 1442!

JOTA-Dealer:

108002.5950.0285 - 02/2017